



// AD-Nearview Lens //

Design Feature

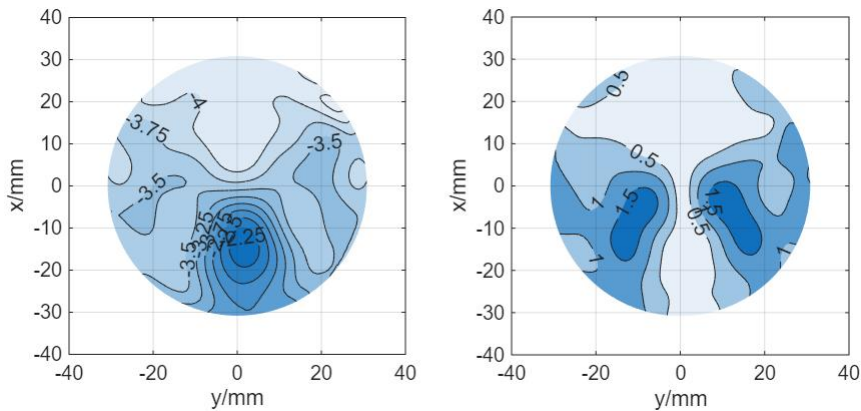
- Ensures a wide, comfortable near-use zone for stable, clear close-up vision.
- Designed to ensure a relatively wide and comfortable near-use zone so that the wearer has a stable and clear field of view when performing close-up actions such as reading, writing, and so on.

Most Suitable Wearers

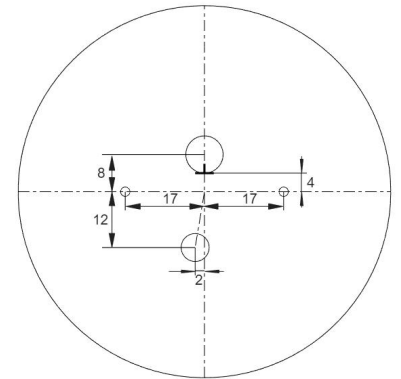
- People who have adapted to progressive products and have higher requirements for reading experience
- People who have certain requirements for near fine vision or whose daily activities are more indoor.

Technical data

➤ Power plot



➤ Fitting diagram



Visual Benefits

- The zoning optimization approach gives priority to the near-use transverse.
- Longitudinal field of view while ensuring the optical performance of the other zones.

Innovative Technologies



Stable-gazing Technology



Seamless Continuous Vision



Binocular vision balance



Ultra low interference

Semi-finished parameters

Base Curve			Back Curve		Semi-Finished CT	Prescription Range	
Nominal	Actual (dpt)	Radius (mm)	Actual (dpt)	Radius (mm)		Sphere power	Cylinders
1.50	1.48D	378.378	6.60	84.848	10.0	-3.25~-6.00	≤-4.00
3.50	3.59D	155.989	6.60	84.848	7.5	-0.00~-3.00	≤-4.00
4.50	4.59D	122.00	6.60	84.848	10.4	+0.25~+3.00	≤-4.00
5.70	6.02D	93.02	6.60	84.848	14.3	+3.25~+5.00	≤-4.00
7.00	8.21D	68.21	6.60	84.848	17.2	+5.25~+8.00	≤-4.00